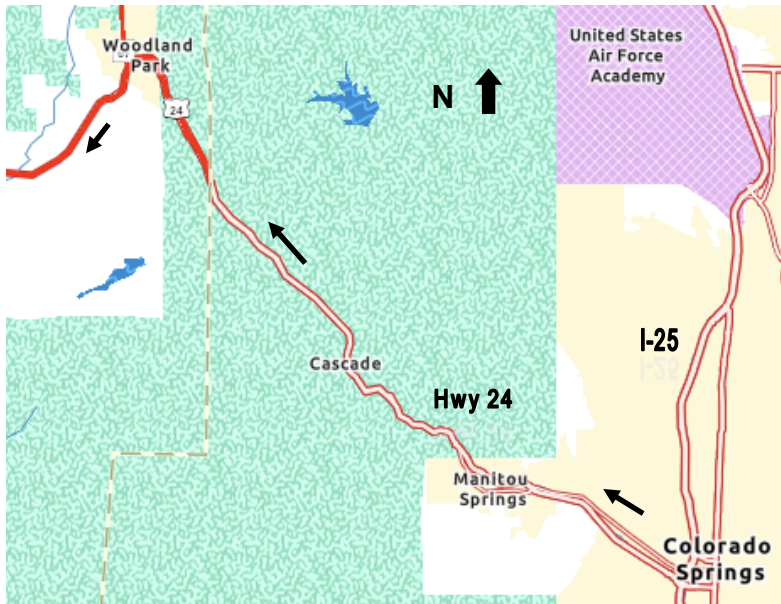
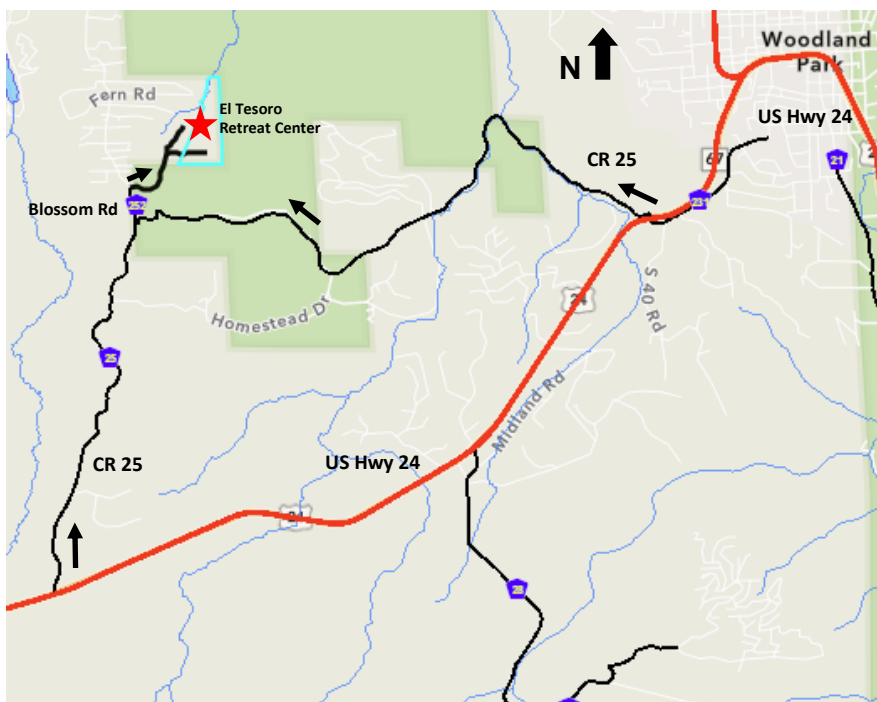


## Directions to El Tesoro Retreat Center



Directions to El Tesoro Retreat Center from Colorado Springs: Take **Exit 141**, Cimarron/Hwy 24 West, and head west toward the mountains. ~18 miles



1. Drive Westbound on US HWY 24 through Woodland Park. At the stoplight just out of town turn **RIGHT** on to CR 25/Trout Creek Rd. ~ 4 miles
2. Take a **RIGHT** at the Yield sign onto Blossom Road (pavement ends).
3. After 0.3 miles take a **RIGHT** at the El Tesoro sign (before entering Tranquil Acres).
4. After ¼ mile on forest service road, pass through El Tesoro gate and follow signs.
5. St. Mary Hall is straight on road to **left** of the Sacred Heart statue and parking is in front of the office for guest and group leader check-ins.